

## Boring Bars & Drills



- DCLN
- MCLN
- MWLN
- SCLP
- SCLC
- STFP
- STFC
- STUP
- STUC
- STUN
- CTFP
- STJO
- SWLP
- SWLO

*Boring & Facing*



*Profiling*

- SDUP
- SDUC
- NKLC

*Threading & Grooving*

- NE

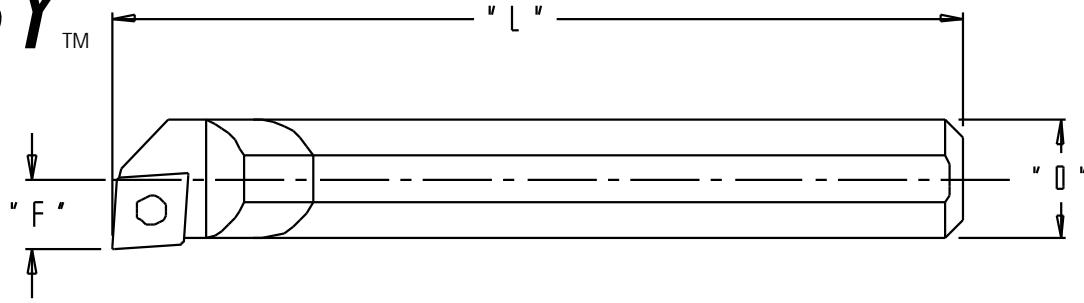


### NTM Inc.

140 N.E. Liberty St  
 Fridley, MN 55432  
 phone: 763-780-1420  
 fax: 763-780-8921

**Made In USA**

# STUBBY™



**DCLN**  
\*Boring & Facing  
\*Uses CNMG insert

## carbide shank

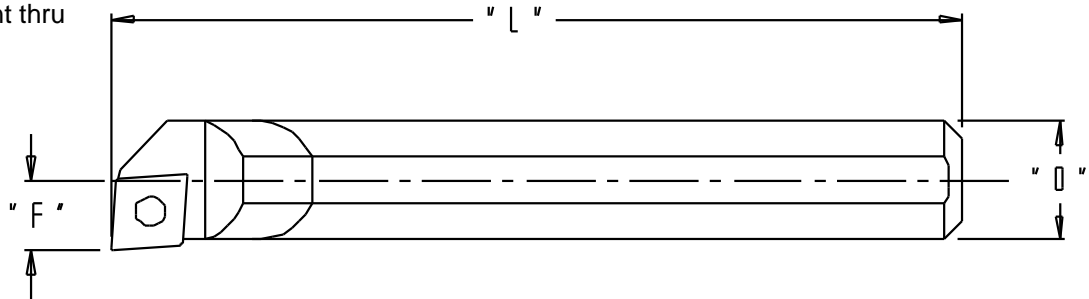
Catalog Number	Shank Dia.	L	F	Min. Bore	Clamp/Screw	Lock Pin	Insert
C16-DCLNR/L-4	1.000	7"	.625	1.125	CK 7 / STC 9	LP-59	CNMG-432

↑ ↑  
"R" for right hand bar  
"L" for left hand bar  
"C" for solid shank  
"E" for coolant thru

## steel shank

Catalog Number	Shank Dia.	L	F	Min. Bore	Clamp/Screw	Lock Pin	Insert
S16-DCLNR/L-4	1.000	7"	.625	1.125	CK 7 / STC 9	LP-59	CNMG-432

↑ ↑  
"R" for right hand bar  
"L" for left hand bar  
"S" for solid shank  
"A" for coolant thru



**MCLN**  
\*Boring & Facing  
\*Uses CNMG insert

## carbide shank

Catalog Number	Shank Dia.	L	F	Min. Bore	Clamp/Screw	Lock Pin	Insert
C16-MCLNR/L-4	1.000	7"	.625	1.125	CK 20 / STC 11	NL-44	CNMG-432

↑ ↑  
"R" for right hand bar  
"L" for left hand bar  
"C" for solid shank  
"E" for coolant thru

## steel shank

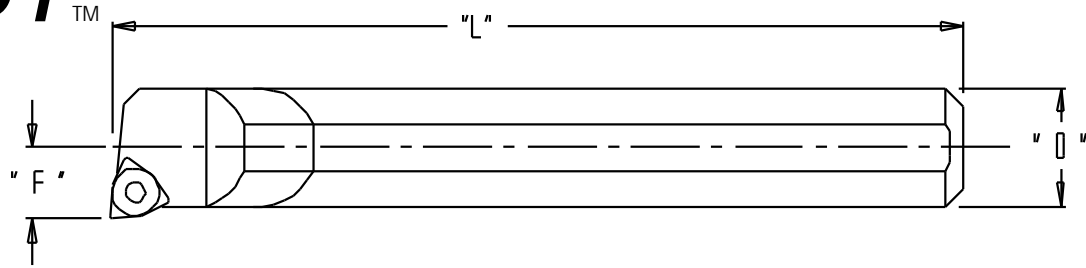
Catalog Number	Shank Dia.	L	F	Min. Bore	Clamp/Screw	Lock Pin	Insert
S16-MCLNR/L-4	1.000	7"	.625	1.125	CK 20 / STC 11	NL-44	CNMG-432

↑ ↑  
"R" for right hand bar  
"L" for left hand bar  
"S" for solid shank  
"A" for coolant thru

\*Heavy metal shanks available, please call for quote\*  
1-800-274-4686



# STUBBY™

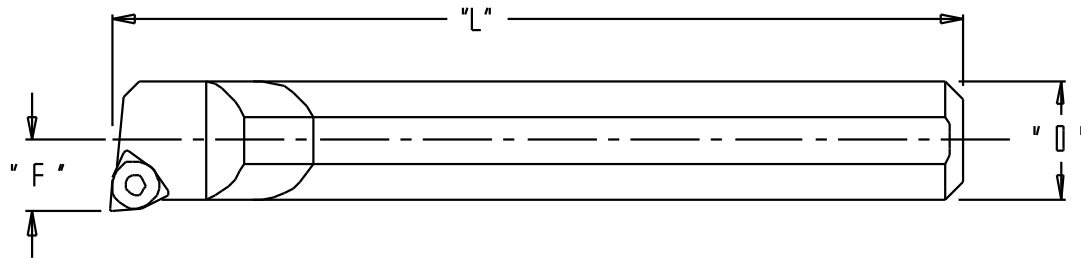


**MWLN**  
 \*Boring & Facing  
 \*Uses WNMG insert

carbide shank

Catalog Number	Shank Dia.	L	F	Min. Bore	Clamp/Screw	Cam Pin	Insert
C10-MWLN-R-3	.625	7"	.438	.751	CK 5 / STC 5	NL-33	WNMG-322
C12-MWLN-R/L-3	.750	7	.500	.875	CK 6 / STC 5	NL-33	WNMG-322
C16-MWLN-R/L-3	1.000	7"	.625	1.125	CK 6 / STC 5	NL-33	WNMG-322
C16-MWLN-R/L-4	1.000	7"	.625	1.125	CK 20 / STC 11	NL-44	WNMG-432

↑ "R" for right hand bar  
 ↑ "L" for left hand bar  
 ↑ "C" for solid shank  
 ↑ "E" for coolant thru



**MWLN**  
 \*Boring & Facing  
 \*Uses WNMG insert

steel shank

Catalog Number	Shank Dia.	L	F	Min. Bore	Clamp/Screw	Cam Pin	Insert
S10-MWLN-R-3	.625	7"	.438	.751	CK 5 / STC 5	NL-33	WNMG-322
S12-MWLN-R/L-3	.750	7	.500	.875	CK 6 / STC 5	NL-33	WNMG-322
S16-MWLN-R/L-3	1.000	7"	.625	1.125	CK 6 / STC 5	NL-33	WNMG-322
S16-MWLN-R/L-4	1.000	7"	.625	1.125	CK 20 / STC 11	NL-44	WNMG-432

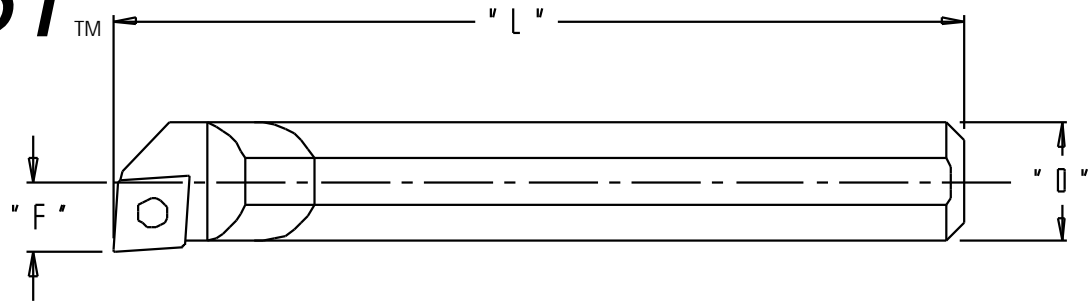
↑ "R" for right hand bar  
 ↑ "L" for left hand bar  
 ↑ "S" for solid shank  
 ↑ "A" for coolant thru

\*Heavy metal shanks available, please call for quote\*  
 1-800-274-4686



# STUBBY™

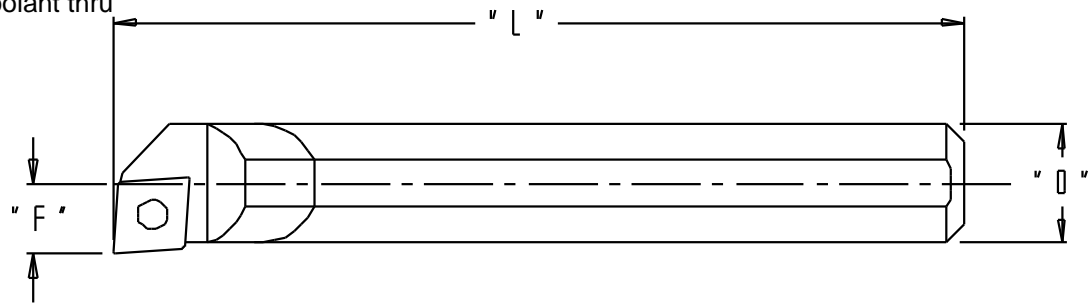
**SCLP**  
\*Boring & Facing  
\*Uses CPMT insert



carbide shank

Catalog Number	Shank Dia.	L	F	Min. Bore	Insert Screw	Insert
C05-SCLPR/L-1.8	.312	5"	.219	.375	MS-1152	CPMT-1.81.51
C06-SCLPR/L-2	.375	5"	.250	.437	MS-1153	CPMT-21.51
C08-SCLPR/L-2	.500	5"	.312	.562	MS-1153	CPMT-21.51
C08-SCLPR/L-3	.500	5"	.312	.562	MS-1155	CPMT-32.52
C10-SCLPR/L-2	.625	7"	.406	.718	MS-1153	CPMT-21.51
C10-SCLPR/L-3	.625	7"	.406	.718	MS-1155	CPMT-32.52
C12-SCLPR/L-3	.750	7"	.500	.875	MS-1155	CPMT-32.52
C16-SCLPR/L-3	1.000	7"	.625	1.125	MS-1155	CPMT-32.52

↑ "R" for right hand bar  
↑ "L" for left hand bar  
↑ "C" for solid shank  
↑ "E" for coolant thru



steel shank

**SCLP**  
\*Boring & Facing  
\*Uses CPMT insert

Catalog Number	Shank Dia.	L	F	Min. Bore	Insert Screw	Insert
S05-SCLPR/L-1.8	.312	5"	.219	.375	MS-1152	CPMT-1.81.51
S06-SCLPR/L-2	.375	5"	.250	.437	MS-1153	CPMT-21.51
S08-SCLPR/L-2	.500	5"	.312	.562	MS-1153	CPMT-21.51
S08-SCLPR/L-3	.500	5"	.312	.562	MS-1155	CPMT-32.52
S10-SCLPR/L-2	.625	7"	.406	.718	MS-1153	CPMT-21.51
S10-SCLPR/L-3	.625	7"	.406	.718	MS-1155	CPMT-32.52
S12-SCLPR/L-3	.750	7"	.500	.875	MS-1155	CPMT-32.52
S16-SCLPR/L-3	1.000	7"	.625	1.125	MS-1155	CPMT-32.52

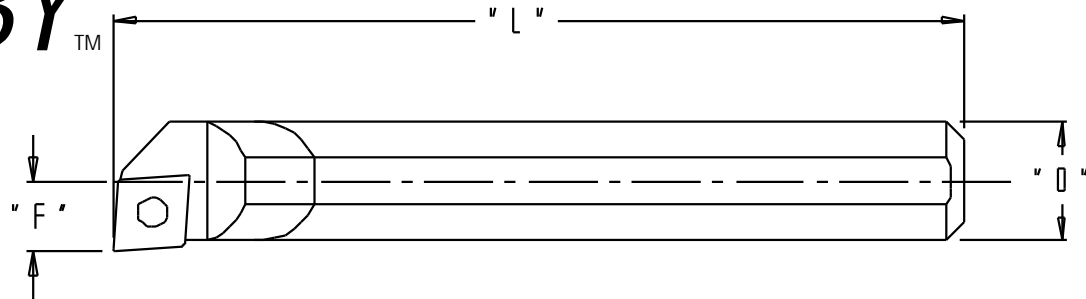
↑ "R" for right hand bar  
↑ "L" for left hand bar  
↑ "S" for solid shank  
↑ "A" for coolant thru

\*Heavy metal shanks available, please call for quote\*  
1-800-274-4686



# STUBBY™

**SCLC**  
 \*Boring & Facing  
 \*Uses CCMT insert

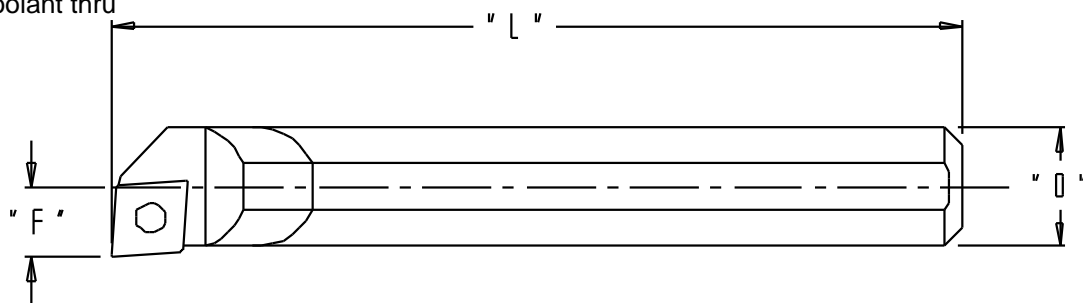


## carbide shank

Catalog Number	Shank Dia.	L	F	Min. Bore	Insert Screw	Insert
C05-SCLCR/L-2	.312	4-1/2"	.219	.375	5513-020-03	CCMT-21.51
C06-SCLCR/L-2	.375	5"	.250	.437	5513-020-03	CCMT-21.51
C08-SCLCR/L-2	.500	5"	.312	.562	5513-020-03	CCMT-21.51
C08-SCLCR/L-3	.500	5"	.312	.562	5513-020-09	CCMT-32.52
C10-SCLCR/L-2	.625	7"	.406	.718	5513-020-03	CCMT-21.51
C10-SCLCR/L-3	.625	7"	.406	.718	5513-020-09	CCMT-32.52
C12-SCLCR/L-3	.750	7"	.500	.875	5513-020-09	CCMT-32.52
C16-SCLCR/L-3	1.000	7"	.625	1.125	5513-020-09	CCMT-32.52
C16-SCLCR/L-4	1.000	7"	.625	1.125	5513-020-17	CCMT-432

↑ ↑  
 "R" for right hand bar  
 "L" for left hand bar  
 "C" for solid shank  
 "E" for coolant thru

**SCLC**  
 \*Boring & Facing  
 \*Uses CCMT insert



## steel shank

Catalog Number	Shank Dia.	L	F	Min. Bore	Insert Screw	Insert
S05-SCLCR/L-2	.312	4-1/2"	.219	.375	5513-020-03	CCMT-21.51
S06-SCLCR/L-2	.375	5"	.250	.437	5513-020-03	CCMT-21.51
S08-SCLCR/L-2	.500	5"	.312	.562	5513-020-03	CCMT-21.51
S08-SCLCR/L-3	.500	5"	.312	.562	5513-020-09	CCMT-32.52
S10-SCLCR/L-2	.625	7"	.406	.718	5513-020-03	CCMT-21.51
S10-SCLCR/L-3	.625	7"	.406	.718	5513-020-09	CCMT-32.52
S12-SCLCR/L-3	.750	7"	.500	.875	5513-020-09	CCMT-32.52
S16-SCLCR/L-3	1.000	7"	.625	1.125	5513-020-09	CCMT-32.52
S16-SCLCR/L-4	1.000	7"	.625	1.125	5513-020-17	CCMT-432

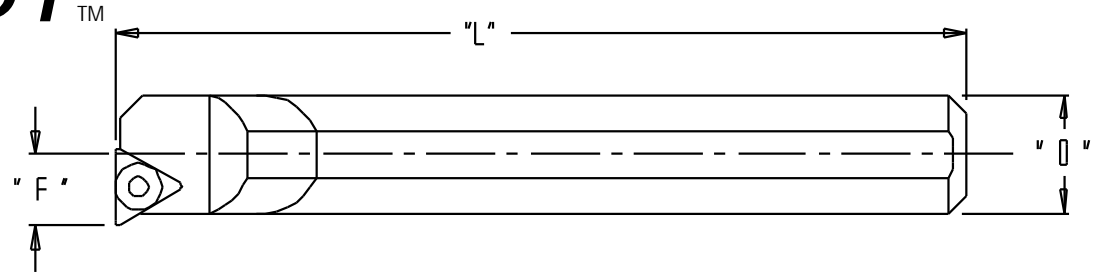
↑ ↑  
 "R" for right hand bar  
 "L" for left hand bar  
 "S" for solid shank  
 "A" for coolant thru

\*Heavy metal shanks available, please call for quote\*  
 1-800-274-4686



# STUBBY™

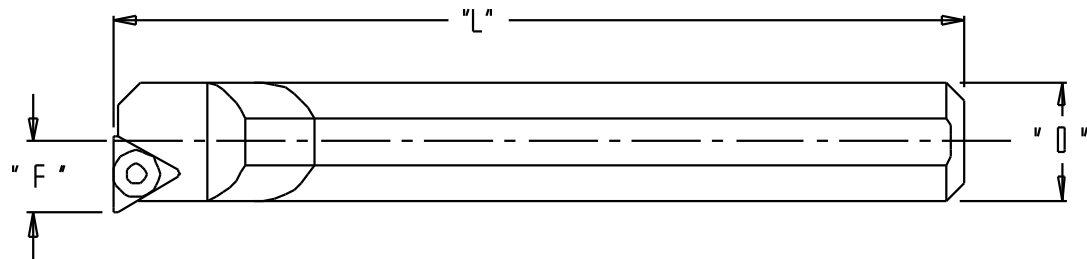
**STFP**  
 \*Boring & Facing  
 \*Uses TPMT insert



## carbide shank

Catalog Number	Shank Dia.	L	F	Min. Bore	Insert Screw	Insert
C06-STFPR/L-2	.375	5"	.250	.437	MS-1153	TPMT-21.51
C08-STFPR/L-2	.500	5"	.312	.562	MS-1153	TPMT-21.51
C10-STFPR/L-2	.625	7"	.406	.718	MS-1153	TPMT-21.51
C12-STFPR/L-3	.750	7"	.500	.875	MS-1155	TPMT-32.52

↑ "R" for right hand bar  
 ↑ "L" for left hand bar  
 ↑ "C" for solid shank  
 ↑ "E" for coolant thru



**STFP**  
 \*Boring & Facing  
 \*Uses TPMT insert

## steel shank

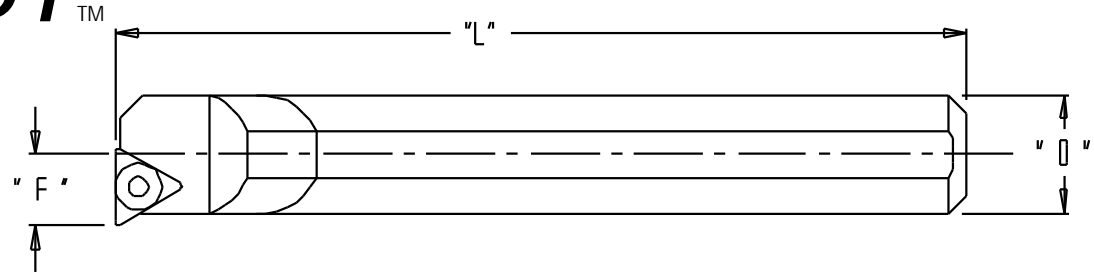
Catalog Number	Shank Dia.	L	F	Min. Bore	Insert Screw	Insert
S06-STFPR/L-2	.375	5"	.250	.437	MS-1153	TPMT-21.51
S08-STFPR/L-2	.500	5"	.312	.562	MS-1153	TPMT-21.51
S10-STFPR/L-2	.625	7"	.406	.718	MS-1153	TPMT-21.51
S12-STFPR/L-3	.750	7"	.500	.875	MS-1155	TPMT-32.52

↑ "R" for right hand bar  
 ↑ "L" for left hand bar  
 ↑ "S" for solid shank  
 ↑ "A" for coolant thru



# STUBBY™

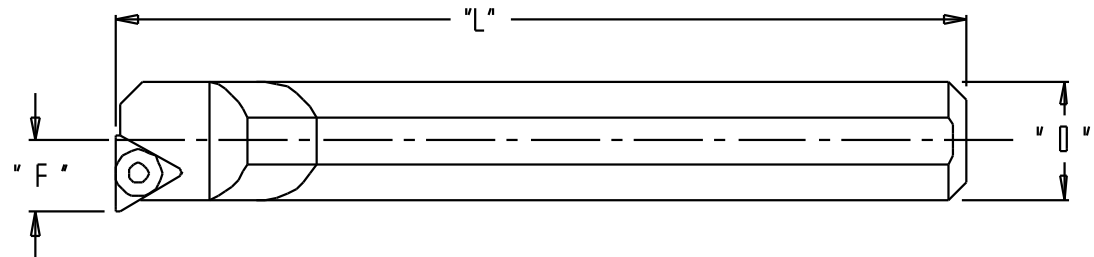
**STFC**  
 \*Boring & Facing  
 \*Uses TCMT insert



## carbide shank

Catalog Number	Shank Dia.	L	F	Min. Bore	Insert Screw	Insert
C06-STFCR/L-2	.375	5"	.250	.437	5513-020-03	TCMT-21.51
C08-STFCR/L-2	.500	5"	.312	.562	5513-020-03	TCMT-21.51
C10-STFCR/L-2	.625	7"	.406	.718	5513-020-03	TCMT-21.51
C12-STFCR/L-2	.750	7"	.500	.875	5513-020-03	TCMT-21.51
C12-STFCR/L-3	.750	7"	.500	.875	5513-020-09	TCMT-32.52

↑ "R" for right hand bar  
 ↑ "L" for left hand bar  
 ↑ "C" for solid shank  
 ↑ "E" for coolant thru



## steel shank

**STFC**  
 \*Boring & Facing  
 \*Uses TCMT insert

Catalog Number	Shank Dia.	L	F	Min. Bore	Insert Screw	Insert
S06-STFCR/L-2	.375	5"	.250	.437	5513-020-03	TCMT-21.51
S08-STFCR/L-2	.500	5"	.312	.562	5513-020-03	TCMT-21.51
S10-STFCR/L-2	.625	7"	.406	.718	5513-020-03	TCMT-21.51
S12-STFCR/L-2	.750	7"	.500	.875	5513-020-03	TCMT-21.51
S12-STFCR/L-3	.750	7"	.500	.875	5513-020-09	TCMT-32.52

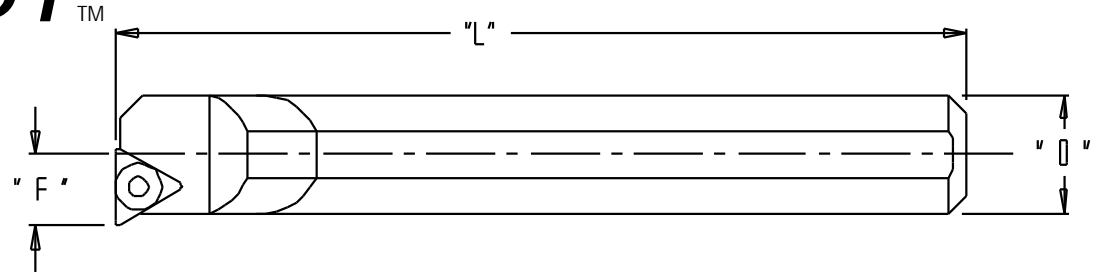
↑ "R" for right hand bar  
 ↑ "L" for left hand bar  
 ↑ "S" for solid shank  
 ↑ "A" for coolant thru

\*Heavy metal shanks available, please call for quote\*  
 1-800-274-4686



# STUBBY™

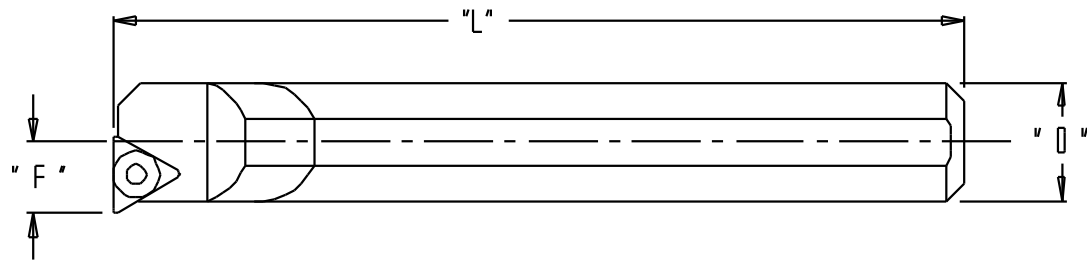
**STUP**  
 \*Boring & Facing  
 \*Uses TPMT insert



## carbide shank

Catalog Number	Shank Dia.	L	F	Min. Bore	Insert Screw	Insert
C06-STUPR/L-2	.375	5"	.250	.437	MS-1153	TPMT-21.51
C08-STUPR/L-2	.500	5"	.312	.562	MS-1153	TPMT-21.51
C10-STUPR/L-2	.625	7"	.406	.718	MS-1153	TPMT-21.51
C12-STUPR/L-3	.750	7"	.500	.875	MS-1155	TPMT 32.52
C16-STUPR/L-3	1.000	7"	.625	1.125	MS-1155	TPMT 32.52

↑ "R" for right hand bar  
 ↑ "L" for left hand bar  
 ↑ "C" for solid shank  
 ↑ "E" for coolant thru



**STUP**  
 \*Boring & Facing  
 \*Uses TPMT insert

## steel shank

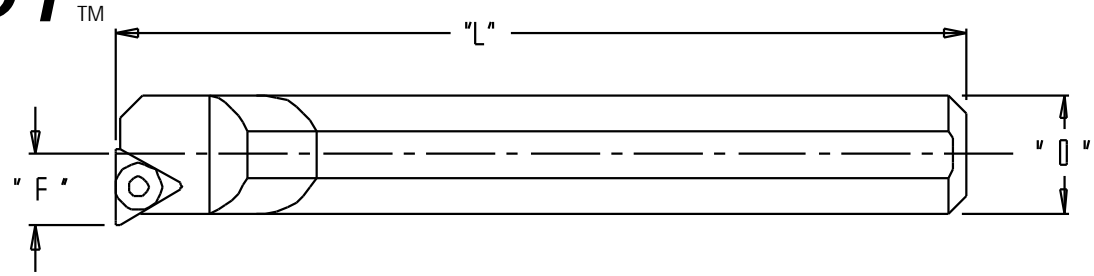
Catalog Number	Shank Dia.	L	F	Min. Bore	Insert Screw	Insert
S06-STUPR/L-2	.375	5"	.250	.437	MS-1153	TPMT-21.51
S08-STUPR/L-2	.500	5"	.312	.562	MS-1153	TPMT-21.51
S10-STUPR/L-2	.625	7"	.406	.718	MS-1153	TPMT-21.51
S12-STUPR/L-3	.750	7"	.500	.875	MS-1155	TPMT 32.52
S16-STUPR/L-3	1.000	7"	.625	1.125	MS-1155	TPMT 32.52

↑ "R" for right hand bar  
 ↑ "L" for left hand bar  
 ↑ "S" for solid shank  
 ↑ "A" for coolant thru



# STUBBY™

**STUC**  
 \*Boring & Facing  
 \*Uses TCMT insert

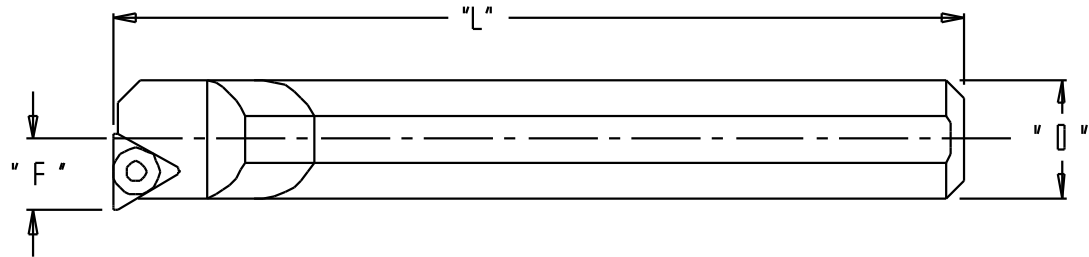


## carbide shank

Catalog Number	Shank Dia.	L	F	Min. Bore	Insert Screw	Insert
C06-STUCR/L-2	.375	5"	.250	.437	5513-020-03	TCMT-21.51
C08-STUCR/L-2	.500	5"	.312	.562	5513-020-03	TCMT-21.51
C10-STUCR/L-2	.625	7"	.406	.718	5513-020-03	TCMT-21.51
C12-STUCR/L-2	.750	7"	.500	.875	5513-020-03	TCMT-21.51
C12-STUCR/L-3	.750	7"	.500	.875	5513-020-09	TCMT-32.52

"R" for right hand bar  
 "L" for left hand bar  
 "C" for solid shank  
 "E" for coolant thru

**STUC**  
 \*Boring & Facing  
 \*Uses TCMT insert



## steel shank

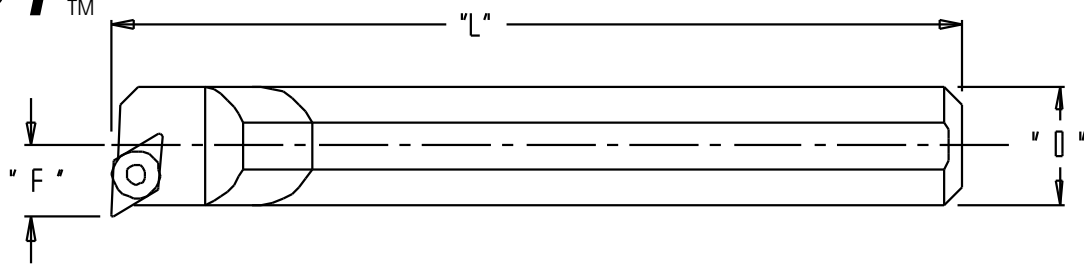
Catalog Number	Shank Dia.	L	F	Min. Bore	Insert Screw	Insert
S06-STUCR/L-2	.375	5"	.250	.437	5513-020-03	TCMT-21.51
S08-STUCR/L-2	.500	5"	.312	.562	5513-020-03	TCMT-21.51
S10-STUCR/L-2	.625	7"	.406	.718	5513-020-03	TCMT-21.51
S12-STUCR/L-2	.750	7"	.500	.875	5513-020-03	TCMT-21.51
S12-STUCR/L-3	.750	7"	.500	.875	5513-020-09	TCMT-32.52

"R" for right hand bar  
 "L" for left hand bar  
 "S" for solid shank  
 "A" for coolant thru



# STUBBY™

**SDUP**  
 \*Boring & Facing  
 \*Uses DPMT insert

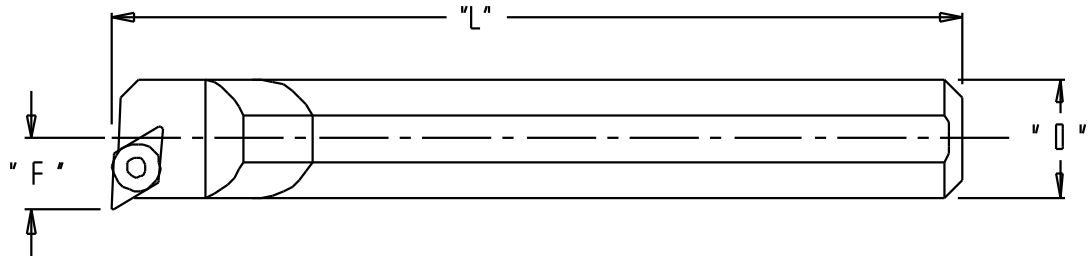


## carbide shank

Catalog Number	Shank Dia.	L	F	Min. Bore	Insert Screw	Insert
C06-SDUPR/L-2	.375	5"	.375	.562	MS-1153	DPMT-21.51
C08-SDUPR/L-2	.500	5"	.437	.687	MS-1153	DPMT-21.51
C10-SDUPR/L-2	.625	7"	.500	.812	MS-1153	DPMT-21.51
C12-SDUPR/L-2	.750	7"	.562	.937	MS-1155	DPMT-32.52

↑ "R" for right hand bar  
 ↑ "L" for left hand bar  
 ↑ "C" for solid shank  
 ↑ "E" for coolant thru

**SDUP**  
 \*Boring & Facing  
 \*Uses DPMT insert



## steel shank

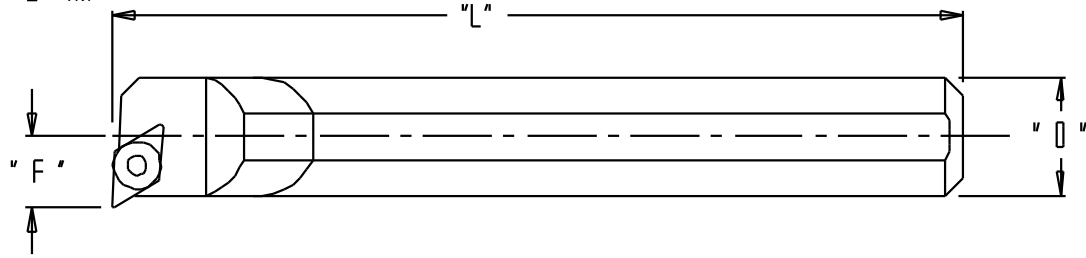
Catalog Number	Shank Dia.	L	F	Min. Bore	Insert Screw	Insert
S06-SDUPR/L-2	.375	5"	.375	.562	MS-1153	DPMT-21.51
S08-SDUPR/L-2	.500	5"	.437	.687	MS-1153	DPMT-21.51
S10-SDUPR/L-2	.625	7"	.500	.812	MS-1153	DPMT-21.51
S12-SDUPR/L-2	.750	7"	.562	.937	MS-1155	DPMT-32.52

↑ "R" for right hand bar  
 ↑ "L" for left hand bar  
 ↑ "S" for solid shank  
 ↑ "A" for coolant thru



# STUBBY™

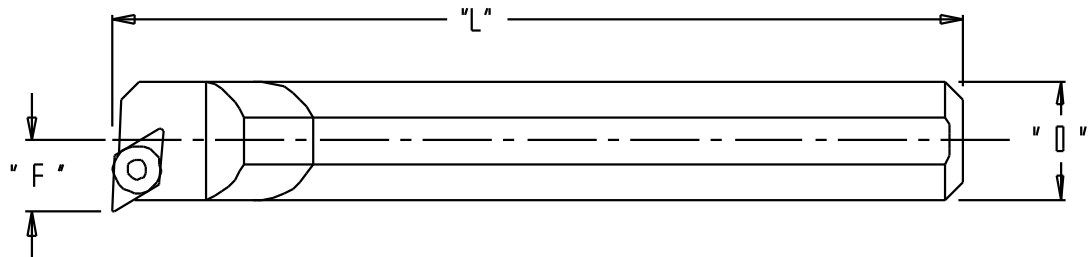
**SDUC**  
 \*Boring & Facing  
 \*Uses DCMT insert



## carbide shank

Catalog Number	Shank Dia.	L	F	Min. Bore	Insert Screw	Insert
C06-SDUCR/L-2	.375	5"	.375	.562	5513-020-03	DCMT-21.51
C08-SDUCR/L-2	.500	5"	.437	.687	5513-020-03	DCMT-21.51
C10-SDUCR/L-2	.625	7"	.500	.812	5513-020-03	DCMT-21.51
C12-SDUCR/L-2	.750	7"	.625	1.00	5513-020-09	DCMT-32.52

↑ "R" for right hand bar  
 ↑ "L" for left hand bar  
 ↑ "C" for solid shank  
 ↑ "E" for coolant thru



**SDUC**  
 \*Boring & Facing  
 \*Uses DCMT insert

## steel shank

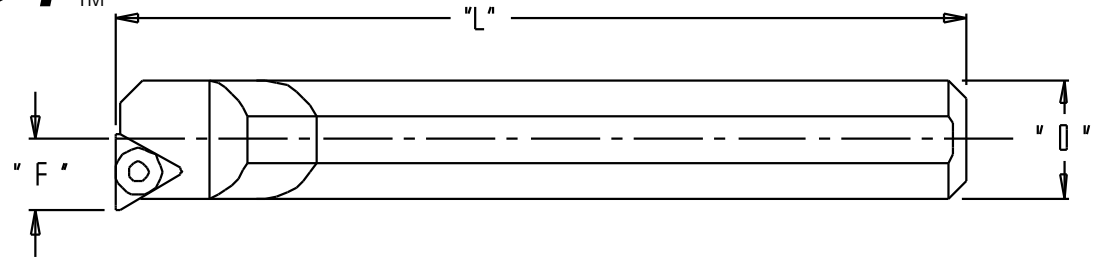
Catalog Number	Shank Dia.	L	F	Min. Bore	Insert Screw	Insert
S06-SDUPR/L-2	.375	5"	.375	.562	MS-1153	DPMT-21.51
S08-SDUPR/L-2	.500	5"	.437	.687	MS-1153	DPMT-21.51
S10-SDUPR/L-2	.625	7"	.500	.812	MS-1153	DPMT-21.51
S12-SDUPR/L-2	.750	7"	.562	.937	MS-1155	DPMT-32.52

↑ "R" for right hand bar  
 ↑ "L" for left hand bar  
 ↑ "S" for solid shank  
 ↑ "A" for coolant thru



# STUBBY™

**STUN**  
 \*Boring & Facing  
 \*Uses TP insert

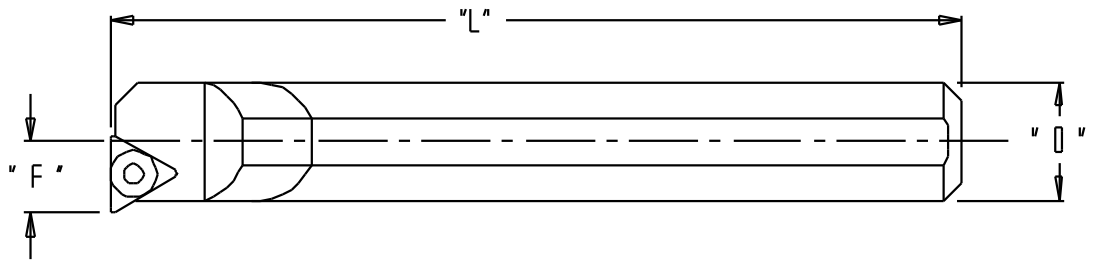


## carbide shank

Catalog Number	Shank Dia.	L	F	Min. Bore	Insert Screw	Insert
C06-STUNR/L-2	.375	5"	.250	.437	S-930	T-221P
C08-STUNR/L-2	.500	5"	.312	.562	S-930	T-221P
C10-STUNR/L-2	.625	7"	.406	.718	S-930	T-221P
C12-STUNR/L-2	.750	7"	.500	.875	S-944	T-321P
C16-STUNR/L-3	1.000	7"	.625	1.125	S-944	T-321P

↑ "R" for right hand bar  
 ↑ "L" for left hand bar  
 ↑ "C" for solid shank  
 ↑ "E" for coolant thru

**STUN**  
 \*Boring & Facing  
 \*Uses TP insert



## steel shank

Catalog Number	Shank Dia.	L	F	Min. Bore	Insert Screw	Insert
S06-STUNR/L-2	.375	5"	.250	.437	S-930	T-221P
S08-STUNR/L-2	.500	5"	.312	.562	S-930	T-221P
S10-STUNR/L-2	.625	7"	.406	.718	S-930	T-221P
S12-STUNR/L-2	.750	7"	.500	.875	S-944	T-321P
S16-STUNR/L-3	1.000	7"	.625	1.125	S-944	T-321P

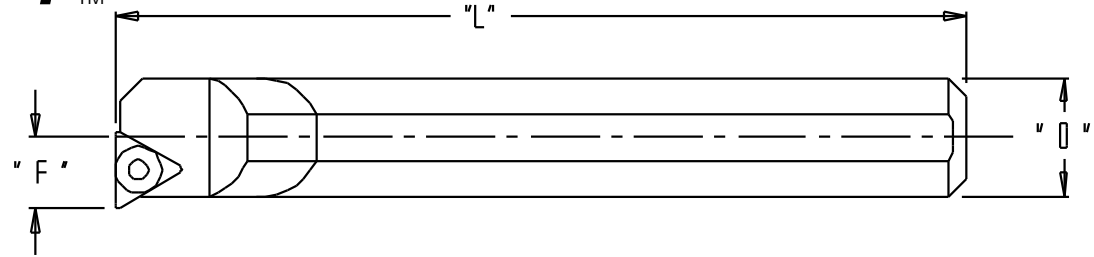
↑ "R" for right hand bar  
 ↑ "L" for left hand bar  
 ↑ "S" for solid shank  
 ↑ "A" for coolant thru





# STUBBY™

**STJO**  
 \*Boring & Facing  
 \*Uses TPGT insert

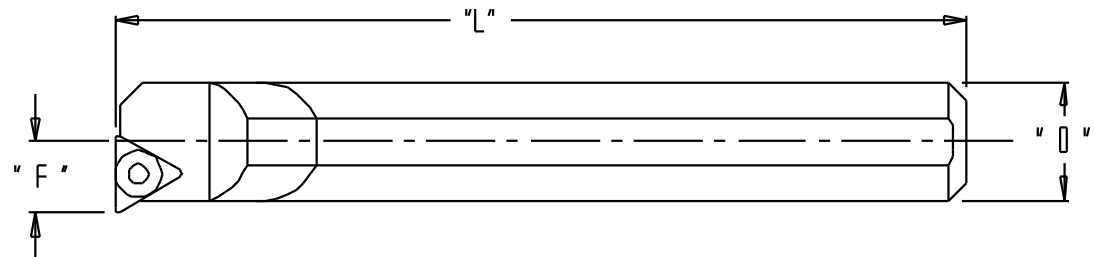


## carbide shank

Catalog Number	Shank Dia.	L	F	Min. Bore	Insert Screw	Insert
CSTJOR/L 062	.375	5"	.250	.437	BFTX0306A	TPGT-221
CSTJOR/L 082	.500	5"	.312	.562	BFTX0307A	TPGT-221
CSTJOR/L 102	.625	7"	.375	.687	BFTX0307A	TPGT-221
CSTJOR/L 123	.750	7"	.500	.875	BFTX0410A	TPGT-332

↑ ↑  
 "R" for right hand bar  
 "L" for left hand bar

"C" for solid shank  
 For coolant thru add  
 "C" to the end of the  
 part number i.e.  
 CSTJOR 123C



**STJO**  
 \*Boring & Facing  
 \*Uses TPGT insert

## steel shank

Catalog Number	Shank Dia.	L	F	Min. Bore	Insert Screw	Insert
S-STJOR/L 062	.375	5"	.250	.437	BFTX0306A	TPGT-221
S-STJOR/L 082	.500	5"	.312	.562	BFTX0307A	TPGT-221
S-STJOR/L 102	.625	7"	.375	.687	BFTX0307A	TPGT-221
S-STJOR/L 123	.750	7"	.500	.875	BFTX0410A	TPGT-332

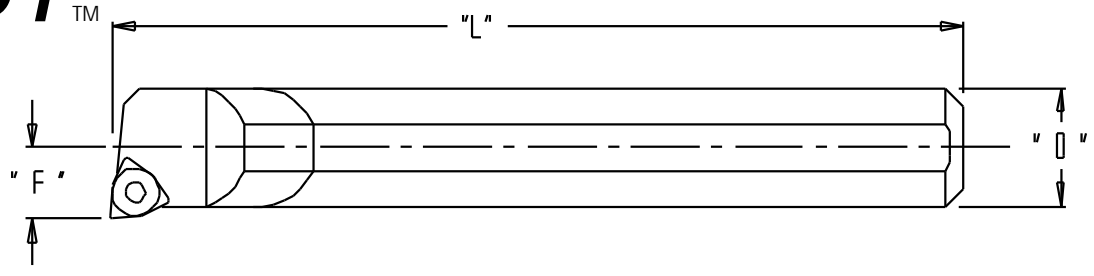
↑ ↑  
 "R" for right hand bar  
 "L" for left hand bar

"S" for solid shank  
 For coolant thru add  
 "C" to the end of the  
 part number i.e.  
 S-STJOR 123C



# STUBBY™

**SWLP**  
 \*Boring & Facing  
 \*Uses WPMT insert



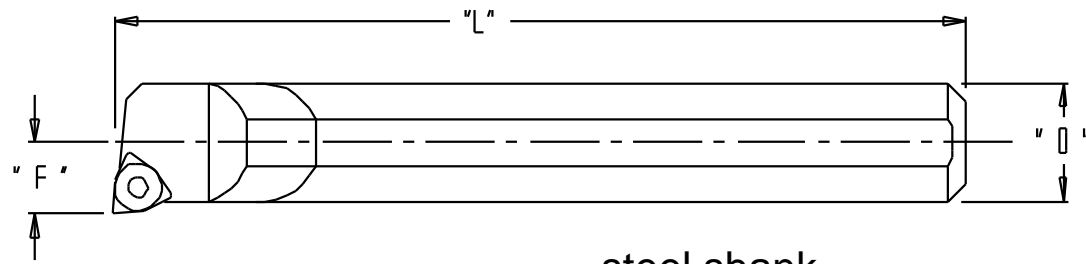
## carbide shank

Catalog Number	Shank Dia.	L	F	Min. Bore	Insert Screw	Insert
C03-SWLPR/L-1.5*	.187	4-1/2"	.126	.219	MS-1438	WPMT 1.51.21
C04-SWLPR/L-1.5	.250	4-1/2"	.156	.281	MS-1438	WPMT 1.51.21
C05-SWLPR/L-1.5	.312	4-1/2"	.219	.375	MS-1438	WPMT 1.51.21
C06-SWLPR/L-2	.375	5"	.250	.437	MS-1153	WPMT 21.51
C08-SWLPR/L-2	.500	5"	.312	.562	MS-1153	WPMT 21.51
C10-SWLPR/L-3	.625	7"	.406	.718	MS-1155	WPMT 32.52
C12-SWLPR/L-3	.750	7"	.500	.875	MS-1155	WPMT 32.52

↑ "R" for right hand bar  
 ↑ "L" for left hand bar

↑ "C" for solid shank  
 ↑ "E" for coolant thru  
 \*coolant thru not available  
 \*\*heavy metal not available under 3/8"

**SWLP**  
 \*Boring & Facing  
 \*Uses WPMT insert



## steel shank

Catalog Number	Shank Dia.	L	F	Min. Bore	Insert Screw	Insert
S06-SWLPR/L-2	.375	5"	.250	.437	MS-1153	WPMT 21.51
S08-SWLPR/L-2	.500	5"	.312	.562	MS-1153	WPMT 21.51
S10-SWLPR/L-3	.625	7"	.406	.718	MS-1155	WPMT 32.52
S12-SWLPR/L-3	.750	7"	.500	.875	MS-1155	WPMT 32.52

↑ "R" for right hand bar  
 ↑ "L" for left hand bar

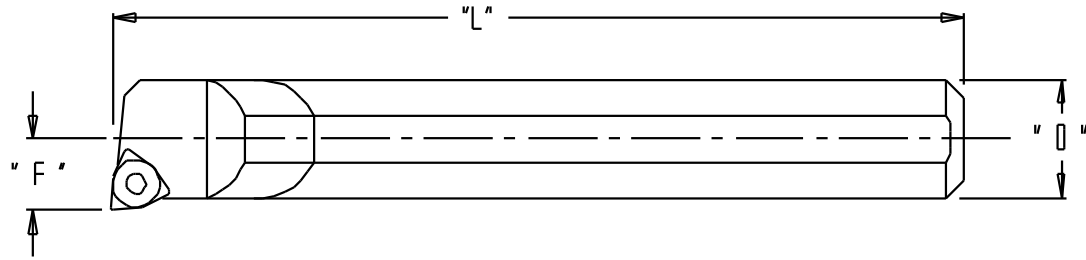
↑ "S" for solid shank  
 ↑ "A" for coolant thru

\*Heavy metal shanks available, please call for quote\*  
 1-800-274-4686



# STUBBY™

**SWLO**  
 \*Boring & Facing  
 \*Uses WCMT insert

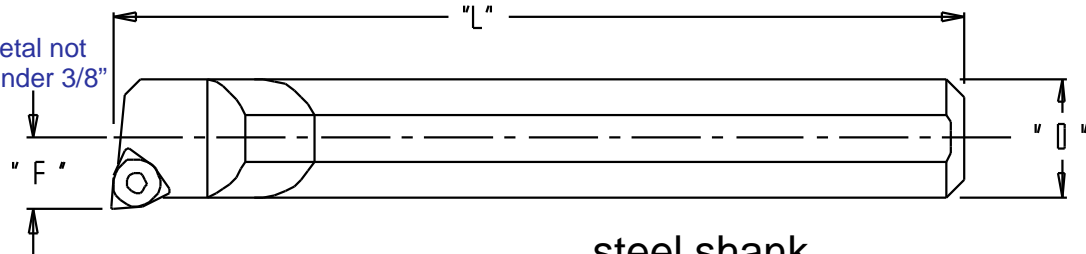


## carbide shank

Catalog Number	Shank Dia.	L	F	Min. Bore	Insert Screw	Insert
CSWLOR 055*	.187	4-1/2"	.114	.207	TS-21	WCMT0201
CSWLOR 065	.250	4-1/2"	.156	.281	TS-2	WCMT0201
CSWLOR 066	.312	4-1/2"	.188	.344	TS-2	WCMTS302
CSWLO504R	.312	4-1/2"	.203	.359	TS-25	WCMT0402
CSWLOR 070	.375	5"	.218	.406	TS-25	WCMT0402
CSWLOR 062	.375	5"	.250	.437	TS-25	WCMT0402
CSWLOR 082	.500	5"	.312	.562	TS-25	WCMT0402
CSWLOR 102	.625	7"	.375	.687	TS-25	WCMT0402
CSWLOR 103	.625	7"	.375	.687	TS-4	WCMT06T3
CSWLOR 123	.750	7"	.500	.875	TS-4	WCMT06T3

↑  
 "C" for solid shank  
 For coolant thru add  
 "C" to the end of the  
 part number i.e.  
 CSWLOR 123C  
 \*Coolant thru not  
 available  
 \*\*Heavy Metal not  
 available under 3/8"

**SWLO**  
 \*Boring & Facing  
 \*Uses WCMT insert



## steel shank

Catalog Number	Shank Dia.	L	F	Min. Bore	Insert Screw	Insert
S-SWLOR 070	.375	5"	.218	.406	TS-25	WCMT0402
S-SWLOR 062	.375	5"	.250	.437	TS-25	WCMT0402
S-SWLOR 082	.500	5"	.312	.562	TS-25	WCMT0402
S-SWLOR 102	.625	7"	.375	.687	TS-25	WCMT0402
S-SWLOR 103	.625	7"	.375	.687	TS-4	WCMT06T3
S-SWLOR 123	.750	7"	.500	.875	TS-4	WCMT06T3

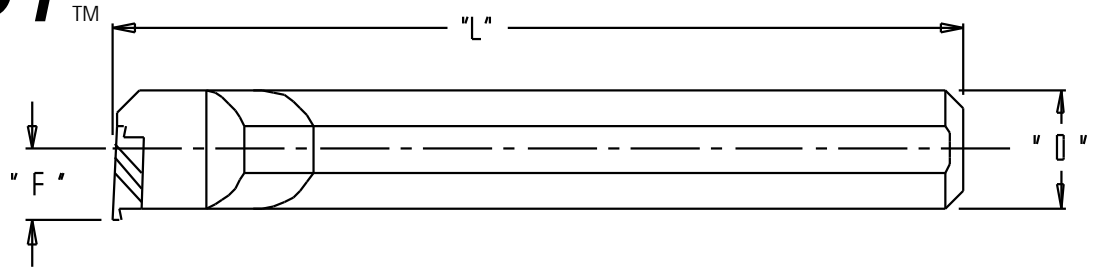
↑  
 "S" for solid shank  
 For coolant thru add  
 "C" to the end of the  
 part number i.e.  
 S-SWLOR 123C

\*Heavy metal shanks available, please call for quote\*  
 1-800-274-4686



# STUBBY™

**NER**  
 \*Thread & Groove  
 \*Uses NG insert

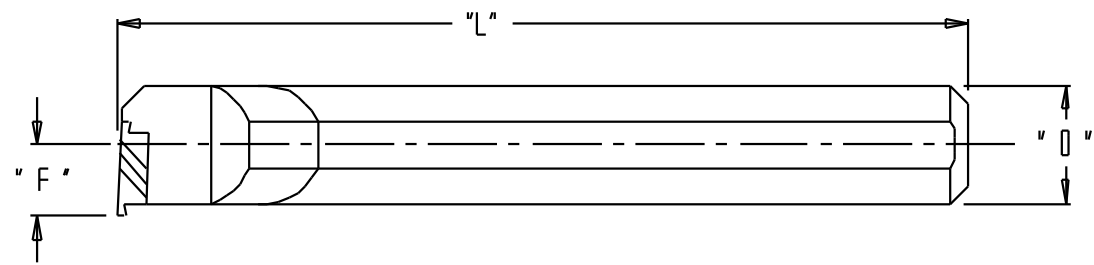


## carbide shank

Catalog Number	Shank Dia.	L	F	Min. Bore	Clamp / Screw	Insert
C08-NEL2	.500	5"	.437	.687	CM-146 / S-39	NG-2R
C10-NEL2	.625	7"	.500	.812	CM-74 / S-310	NG-2R
C12-NEL2	.750	7"	.562	.937	CM-74 / S-310	NG-2R
C08-NER2	.500	5"	.437	.687	CM-147 / S-39	NG-2L
C10-NER2	.625	7"	.500	.812	CM-75 / S-310	NG-2L
C12-NER2	.750	7"	.562	.937	CM-75 / S-310	NG-2L

↑ "C" for solid shank  
 "E" for coolant thru

**NER**  
 \*Thread & Groove  
 \*Uses NG insert



## steel shank

Catalog Number	Shank Dia.	L	F	Min. Bore	Insert Screw	Insert
S08-NEL2	.500	5"	.437	.687	CM-146 / S-39	NG-2R
S10-NEL2	.625	7"	.500	.812	CM-74 / S-310	NG-2R
S12-NEL2	.750	7"	.562	.937	CM-74 / S-310	NG-2R
S08-NER2	.500	5"	.437	.687	CM-147 / S-39	NG-2L
S10-NER2	.625	7"	.500	.812	CM-75 / S-310	NG-2L
S12-NER2	.750	7"	.562	.937	CM-75 / S-310	NG-2L

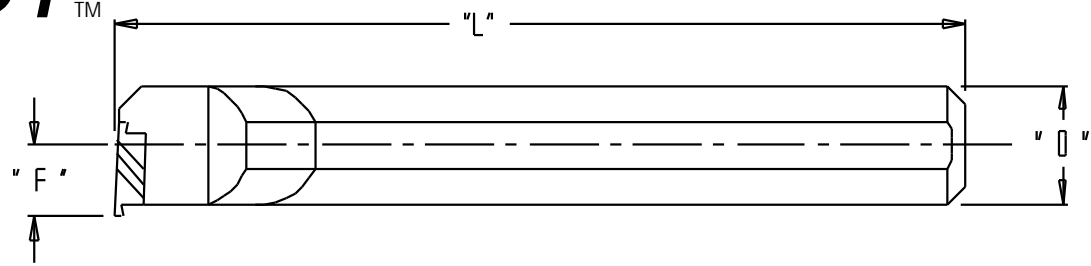
↑ "S" for solid shank  
 "A" for coolant thru

\*Heavy metal shanks available, please call for quote\*  
 1-800-274-4686



# STUBBY™

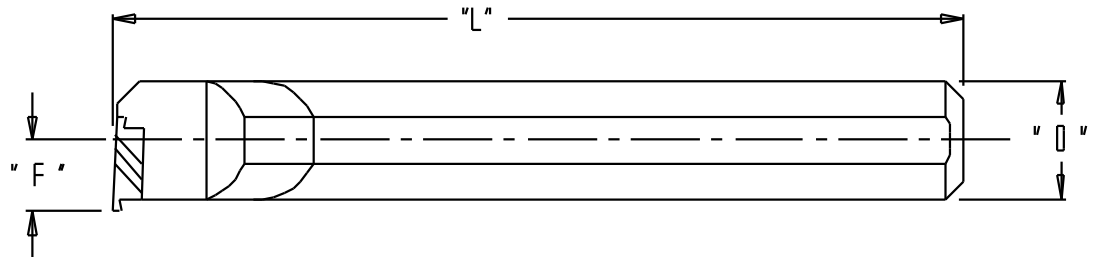
**NKLC**  
 \*Boring & Profiling  
 \*Uses NPGR insert



## carbide shank

Catalog Number	Shank Dia.	L	F	Shim / Screw	Min. Bore	Clamp / Screw	Insert
C08-NKLCL05	.500	5"	.375		.625	CM-105 / S-518	NPGR51R
C10-NKLCL05	.625	7"	.500	SM-285 / S-959	.812	CM-71 / S-524	NPGR51R
C12-NKLCL05	.750	7"	.562	SM-285 / S-959	.937	CM-68 / S-524	NPGR51R
C08-NKLCL05	.500	5"	.375		.625	CM-106 / S-518	NPGR51L
C10-NKLCL05	.625	7"	.500	SM-286 / S-959	.812	CM-79 / S-524	NPGR51L
C12-NKLCL05	.750	7"	.562	SM-286 / S-959	.937	CM-68 / S-524	NPGR51L

↑  
 "C" for solid shank  
 "E" for coolant thru



**NKLC**  
 \*Boring & Profiling  
 \*Uses NPGR insert

## steel shank

Catalog Number	Shank Dia.	L	F	Shim / Screw	Min. Bore	Clamp / Screw	Insert
S08-NKLCL05	.500	5"	.375		.625	CM-105 / S-518	NPGR51R
S10-NKLCL05	.625	7"	.500	SM-285 / S-959	.812	CM-71 / S-524	NPGR51R
S12-NKLCL05	.750	7"	.562	SM-285 / S-959	.937	CM-68 / S-524	NPGR51R
S08-NKLCL05	.500	5"	.375		.625	CM-106 / S-518	NPGR51L
S10-NKLCL05	.625	7"	.500	SM-286 / S-959	.812	CM-79 / S-524	NPGR51L
S12-NKLCL05	.750	7"	.562	SM-286 / S-959	.937	CM-68 / S-524	NPGR51L

↑  
 "S" for solid shank  
 "A" for coolant thru

\*Heavy metal shanks available, please call for quote\*  
 1-800-274-4686



January 2009

# STUBBY™

## *Indexable Drills*

*Stub length 2x diameter*

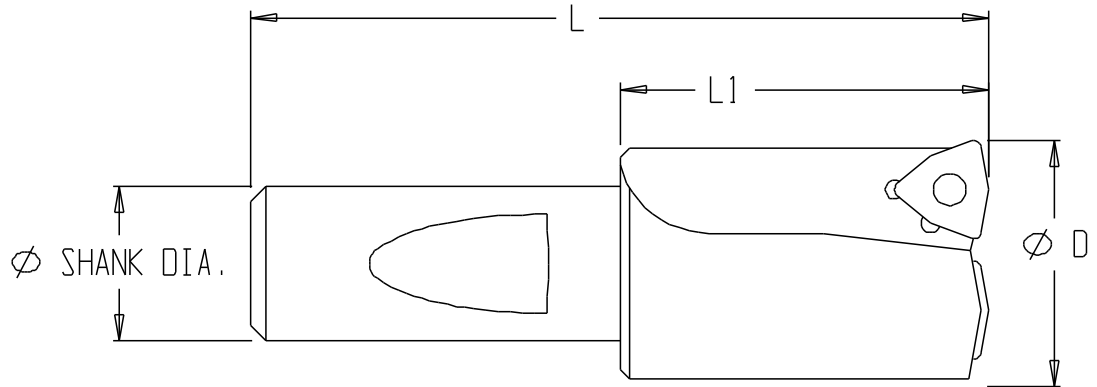


**NTM Inc.**

140 N.E. Liberty St  
Fridley, MN 55432  
phone: 763-780-1420  
fax: 763-780-8921

**Made In USA**

# STUBBY™



**NTD**  
Stub length  
Indexable Drills  
\*Uses WCMT insert

Catalog Number	D	L1	L	Shank Dia.	Insert Screw	Insert
NTD-09	9/16"	1 1/8"	2 5/8"	.500	N0056040	W29.10010.04
NTD-10	5/8"	1 1/4"	2 3/4"	.500	N0056040	W29.10010.04
NTD-12	3/4"	1 1/2"	3"	.625	N0056040	W29.10010.04
NTD-14	7/8"	1 3/4"	3 1/2"	.750	N0057551	W29.18010.04
NTD-16	1"	2"	3 7/8"	.750	N0057510	W2924010.04
NTD-18	1 1/8"	2 1/4"	4"	1.000	N0057510	W2924010.04
NTD-20	1 1/4"	2 1/2"	4 1/4"	1.000	N0057510	W2924010.04

↑ Add "C" to the end of the part number for coolant thru i.e. NTD-20C

**Stubby** drills are manufactured to the highest quality standards. They are designed with shorter flute lengths and shanks that fit standard collet and endmill holders.

The shorter flute length gives **Stubby** drills greater rigidity which translates into higher production rates and extended insert life.

